



# OCP SUMMIT

March 20-21  
2018  
San Jose, CA

**OPEN. FOR BUSINESS.**



# "A Programmable Network"

Nasser Noei, Director of Software, Delta Networks

**OPEN. FOR BUSINESS.**





# Overview

**Founded: 1971**

**World's No. 1 in:**

- Switching Power Supplies since 2002
- DC Brushless Fans since 2006

**Leading in:**

- Telecom Power Systems
- Industrial Automation
- Passive and Magnetic Components
- Networking Products
- Visual Displays
- Datacenter Infrastructure
- Renewable Energy Solutions



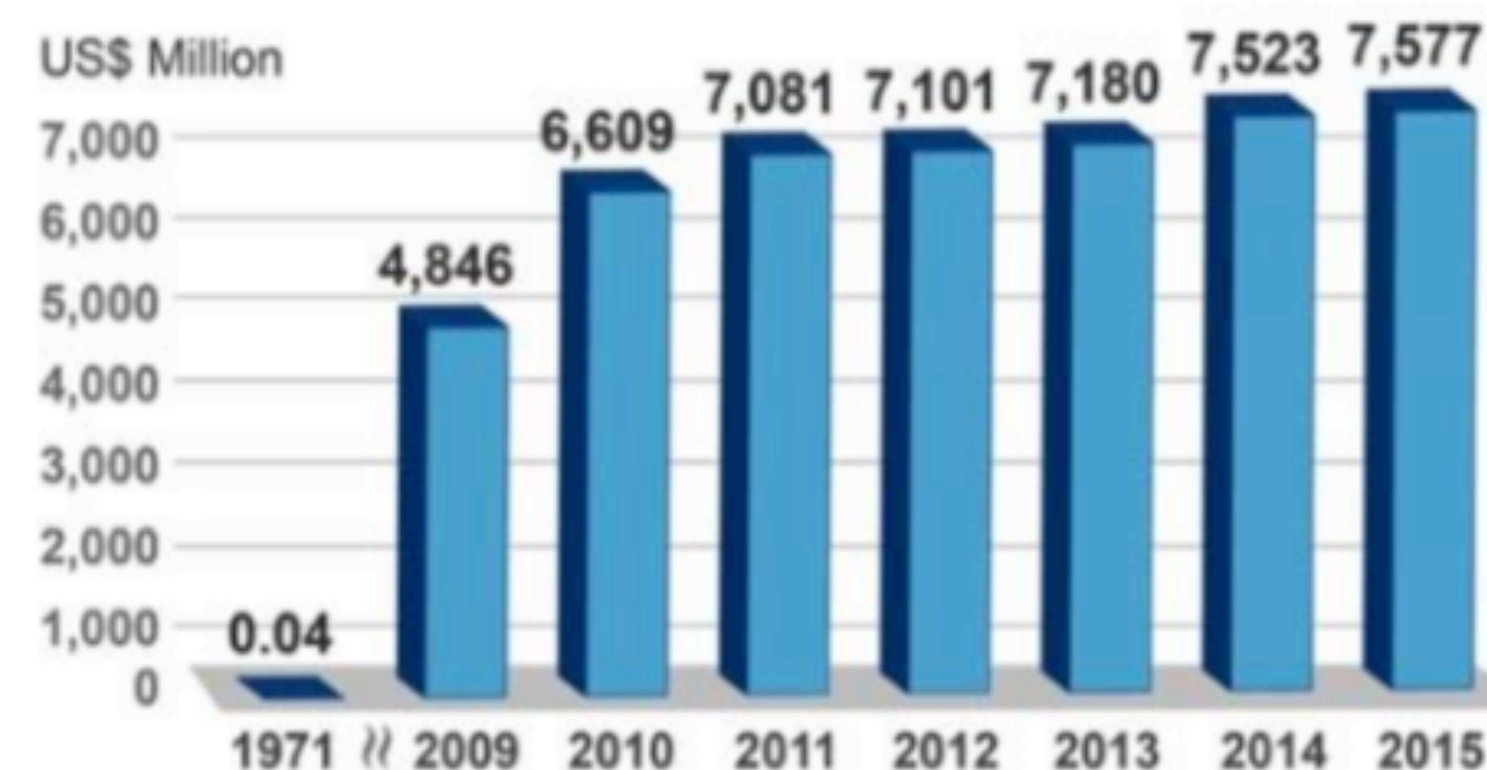
Bruce Cheng  
Founder and Honorary Chairman



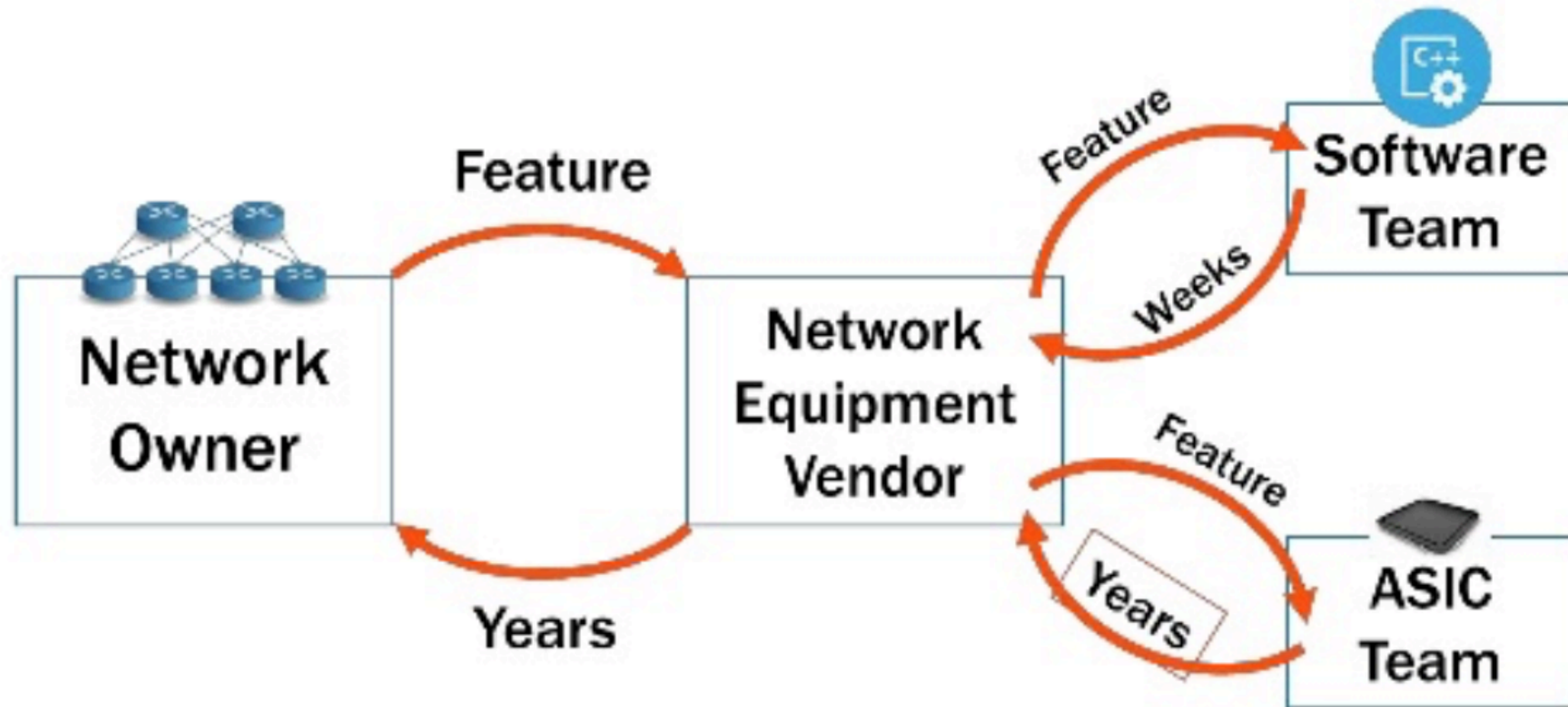
Yancey Hai  
Chairman

## Worldwide Revenues

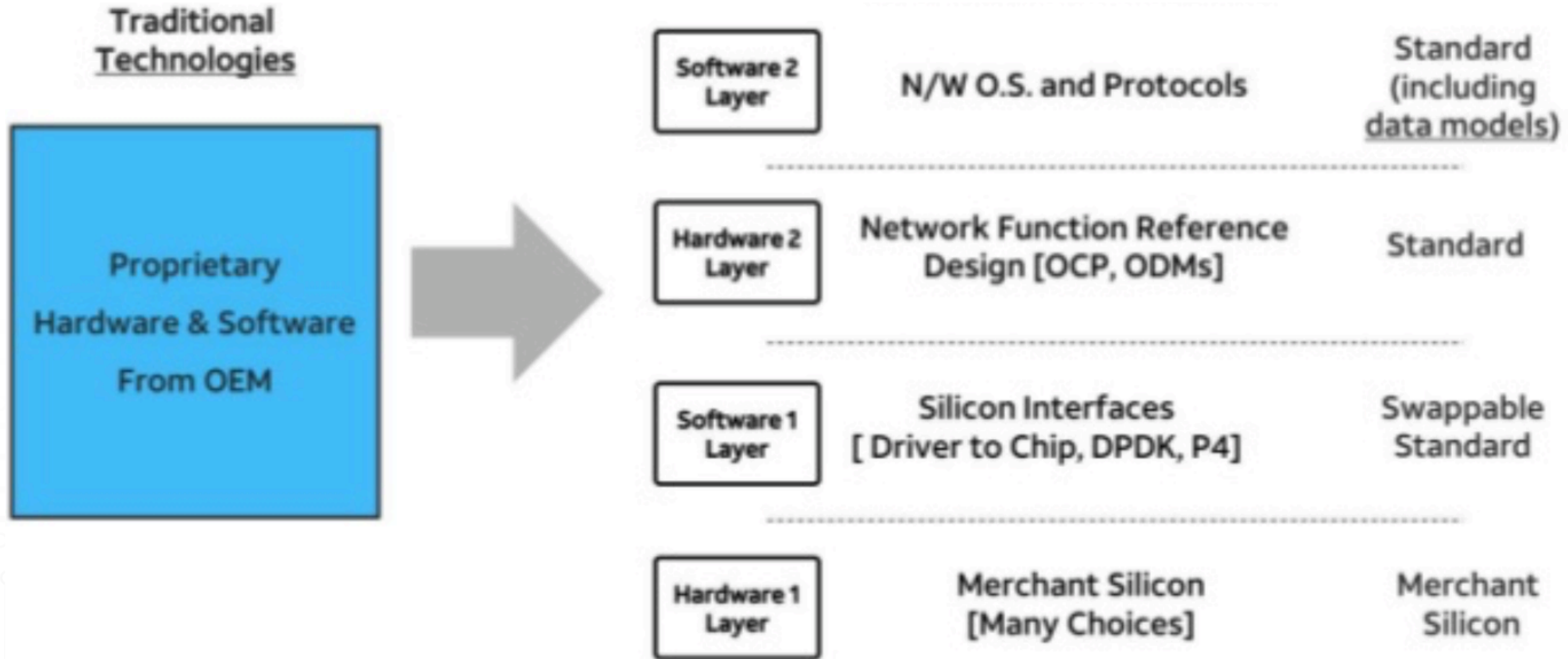
**CAGR: 31.8%**



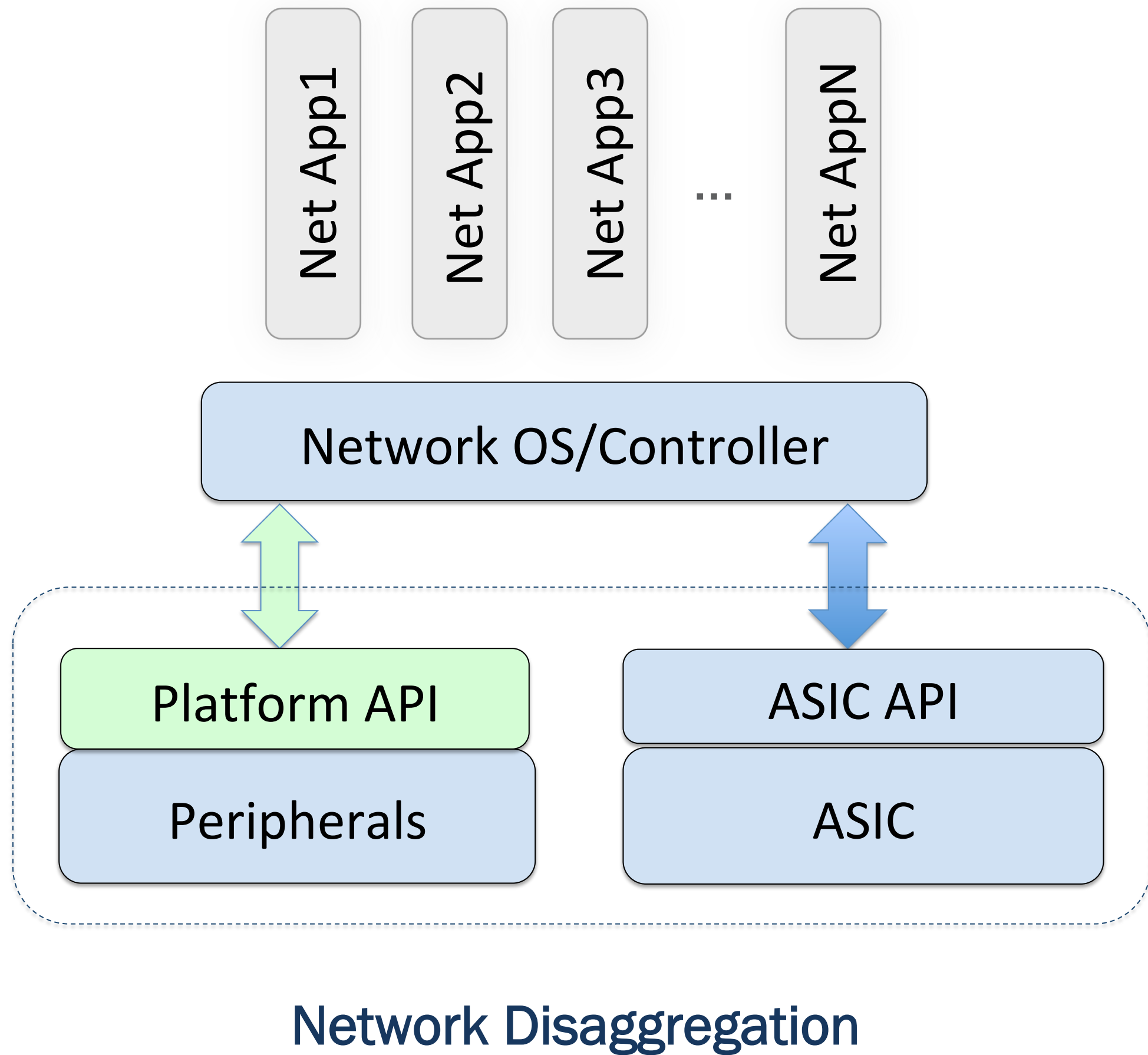
# Why is programmability important



# White-box Elements



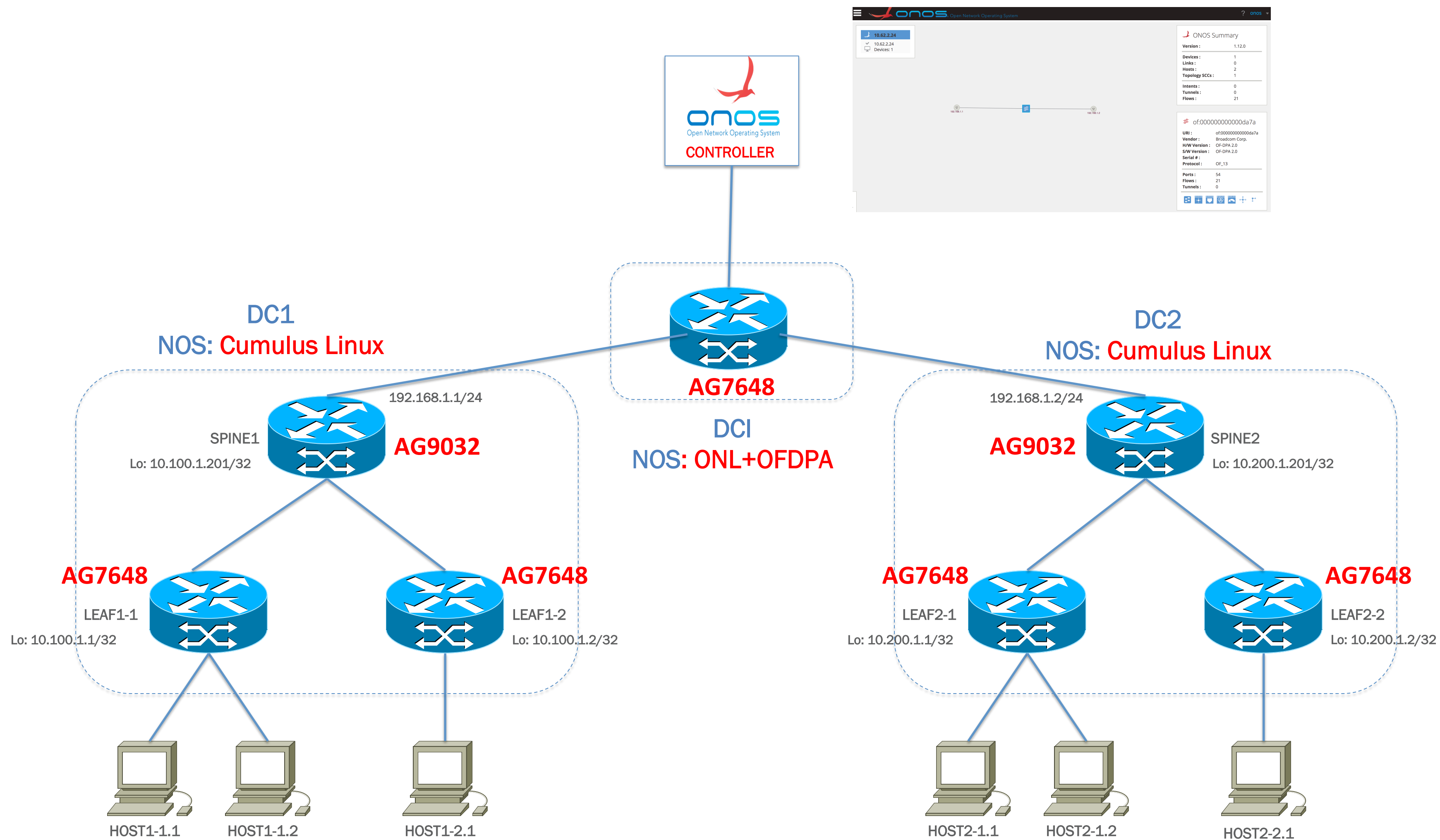
# Presentation Agenda



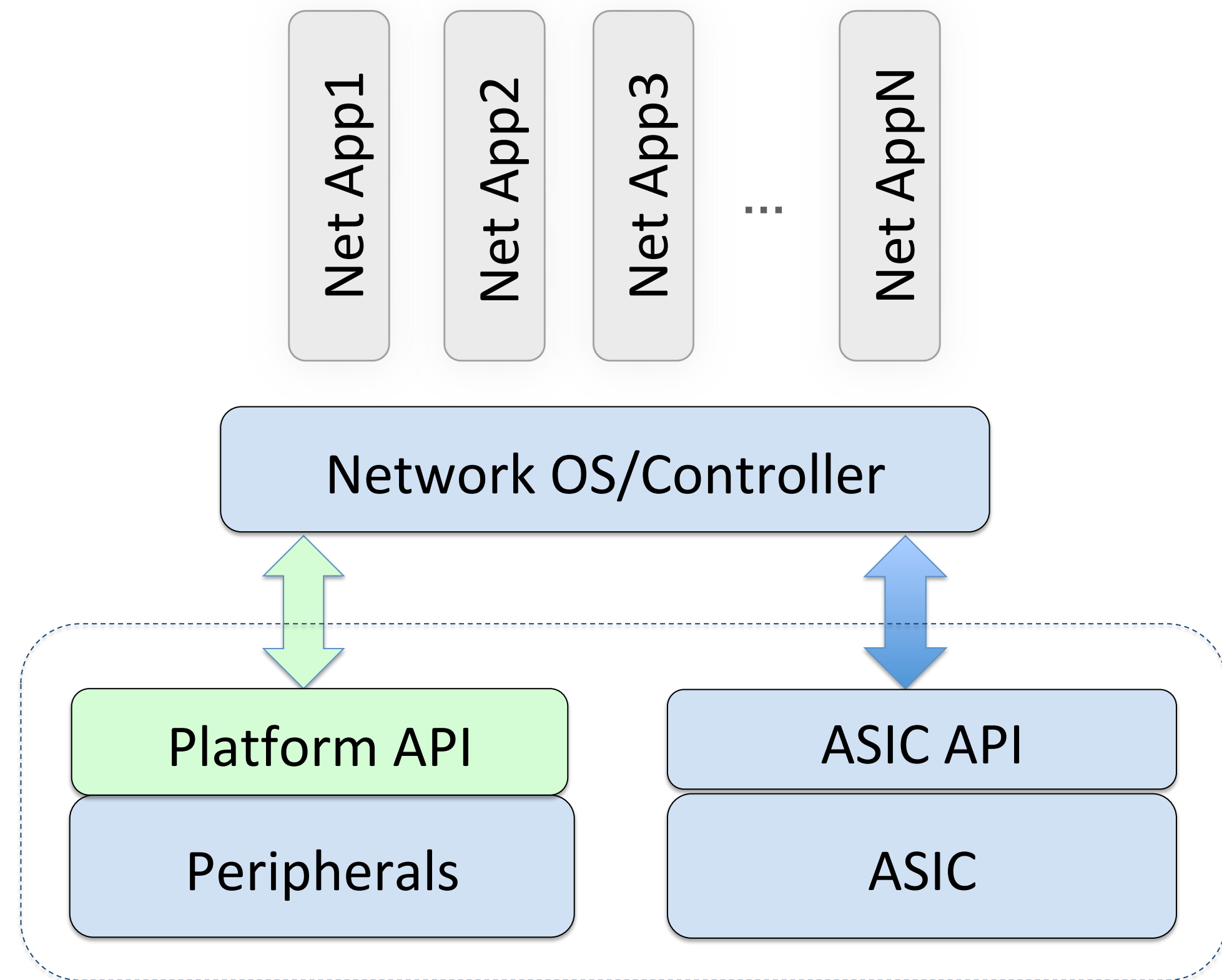
Today We will present

1. Delta Networks white-box switches running Cumulus Linux OS as Data Centers
2. Delta Networks white-box switch installed with ONL+OFDPA 1.3 as Data Center Interconnect (DCI)
3. Open Platform API to control the platform environmental

# Data Center Interconnect (DCI)



# Why Delta White-box Platform API?



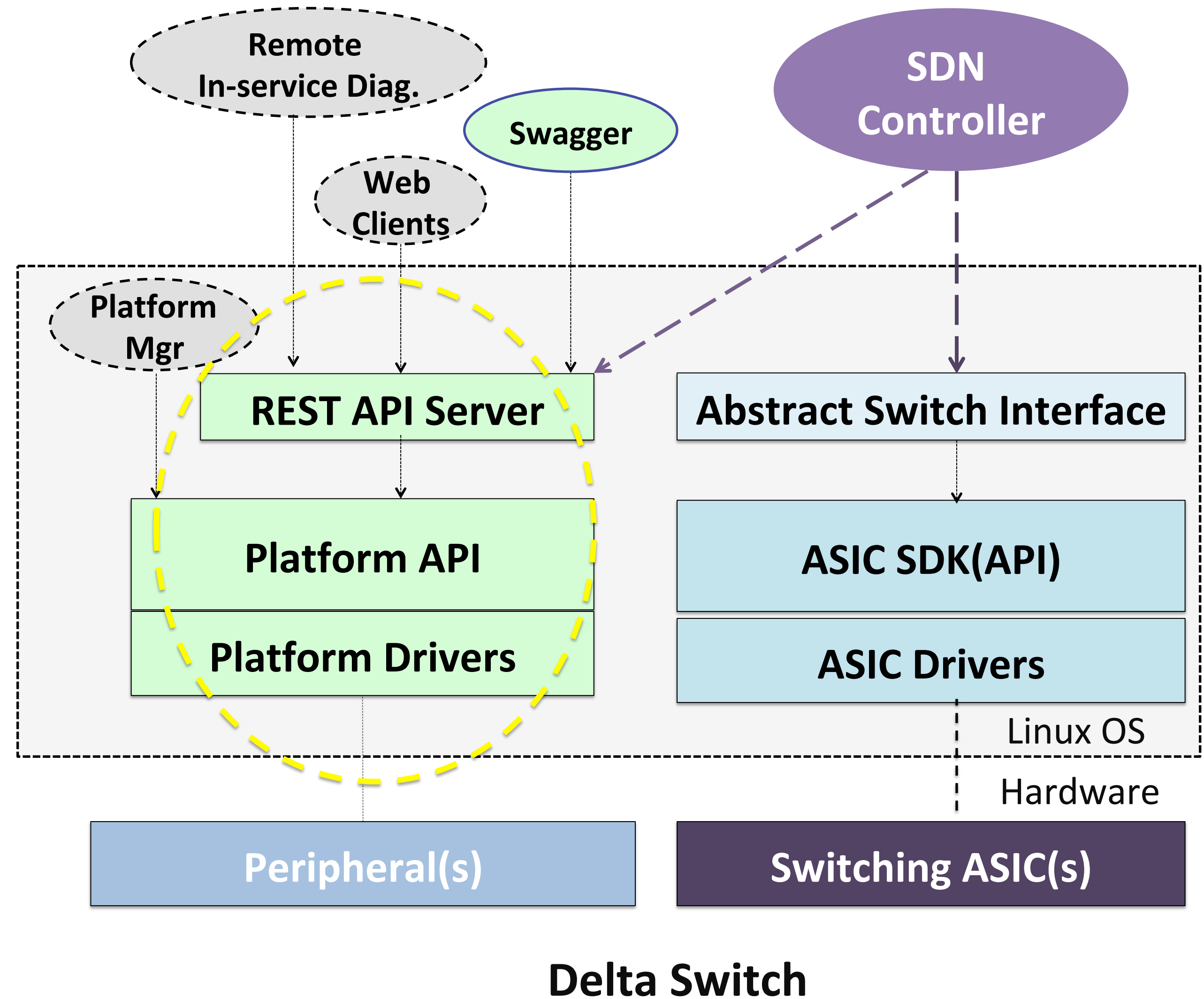
Network Disaggregation

- Get customer on board faster
  - open software library
  - **ONE set** of API across different delta platforms
  - No need for hardware spec.
  - No need to know platform specific stuff.
- Cut down customer's development time



# Delta Platform API

- High-Level abstracted interface to the environmental on Delta Switches
- Generic and common API across different Delta Switches
- Light weight Implementation
- Enable control of environmental on and off the box





# Delta Platform REST API

## Delta Platform API 1.0.0

[ Base URL: 10.62.2.56:5000/platform ]

[./swagger.yaml](#)

Delta Platform REST API Definitions.

[Contact the developer](#)

Copyright Delta Electronics (Americas) Ltd

Schemes

HTTP

### FAN

- GET** /fan/ Get a list of FAN ID's available in the system
- GET** /fan/{fanId}/rpm Get the rpm of FAN
- POST** /fan/{fanId}/rpm Set the rpm of FAN
- GET** /fan/{fanId}/caps Get the capability of FAN
- GET** /fan/{fanId}/description Get the description of FAN

### LED

- GET** /led/ Get a list of LED ID's available in the system
- GET** /led/{ledId}/mode Get the mode of LED
- POST** /led/{ledId}/mode Set the LED Mode
- GET** /led/{ledId}/caps Get the capability of LED



# OCP SUMMIT

For more questions please visit us at **Delta booth #: B48**